



**CASTLEBROOK**  
HOMES LIMITED

# Castlebrook Homes

By Ken Clarke

Part II of Castlebrook Homes' plans for its Deer Ridge project celebrates a grand unveiling this weekend with a pulse-quickening two-storey executive home that marries elegance with energy efficiency.

The 3,155-square-foot home, part of Castlebrook's Deer Ridge "Estates Series" of Houses, is "much more than a pretty place," quipped Jay Rickard, president and chief designer of the Kitchener-based company.

"It follows a traditional sort of layout in so far as it caters to formal dining, has a big open family room adjoining a large kitchen," Rickard explained.

The model house departs from the norm in its lavish attention to materials and detail, sporting a lively mix of ceramic tile and maple floors, a variety of stunning ceiling treatments, while maintaining a high level of energy efficiency.

Some of the energy efficient features include: Low-E, argon-filled glass, a mechanical high-efficiency HRV system, R-20 walls, R-40 attic and insulation upgrades throughout.

Energy efficiency may appeal to the pocket-book but it hardly does justice to the drama and downright sexiness of Rickard's design.

From a wide porch, anchored by thick curving columns, you enter through an extra wide entry woodgrain door with matching sidelights into a grand foyer plaid in ceramic, with a formal dining room and den to greet you on the left.

A privacy corridor to the right leads to a powder room, mudroom and access to the oversize double garage.

An eggcrate coffered ceiling spans the dining room and beyond to an open family room. There is a walkout from the family room, through a French door featuring twin sidelights and a transom. All of the main floor windows have valances, in fact, adding to the unusually bright cheer of the home.

The 12- by 16-foot kitchen is a study in contrasts. Two tones of maple cabinetry, pale sage green and dark cappuccino, complement the light earth tones of the ceramic floor, while white marbly

tile paves the floor of the dinette or "morning room" which, at 10 by 16 feet, easily lodges a harvest table under an arched cathedral ceiling.

As with the bungalow model home Rickard opened in Deer Ridge last September, storage space is not an issue in this house. Kitchen space is to die for and spacious storage closets and cupboards grace nearly every room.

The family room has a huge built-in entertainment centre, smart wired and ready for the big-screen TV, which lodges a gas fireplace with heatilator.

Travel upstairs and delight in the wardrobe space allotted each of the four bedrooms, including a 10 by 10 walk-in with an extensive closet organizer system built in that serves the close to 400-square-foot master bedroom. The five-piece ensuite is also spatially exuberant, with a big spa tub to get lost in.

The three secondary bedrooms are well proportioned at 12 by 15, 12 by 13 and 11.6 by 12.

The stairway is extra wide to facilitate the movement of furniture and household traffic. A ceiling fan above the stairs is set in a special recess in the ceiling that promotes its efficiency.

Castlebrook Homes has 14 lots, including the two model homes, available for sale in this exclusive enclave, with prices starting at around \$500,000 and falling nearly within the shadow of the landmark Pioneer Tower. There are a number of models to choose from, all beautiful one-off custom designs. The oddly shaped tower was built to overlook the Grand River in 1925 and commemorate the community's German Mennonite founders.

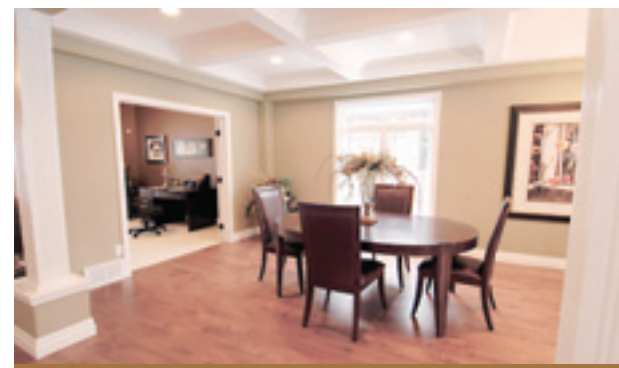
It is a bewitching subdivision that is minutes from the Highway 401/Highway 8 interchange, surrounded by miles of hiking and biking trails, golf course and forested open space.

***Don't miss a chance to explore this entrancing home. Open House hours are from 2 p.m. to 4 p.m. Saturdays and Sundays, and from 3 p.m. to 7 p.m. Mondays and Tuesdays.***

## How to get there:

To get there, take Deer Ridge Drive to Joseph Schoerg Crescent until it intersects Jacob Gingrich Drive.

The two model homes sit side by side at 3 & 5 Jacob Gingrich Dr., Kitchener.



## About the Builder:

When the Taing family moved into their new home in north Waterloo there were no unpleasant surprises. "It was a very different experience from the first time I bought a new home," she recalls. In a thank you letter they wrote, "We recognize that because you hold very high standards in your staff and in the workmanship of your homes, the homebuyers truly benefit. You shared many ideas and listened to many of ours, and that combination made our home one of a kind. You and your staff have shown a tremendous amount of empathy which has made us feel you genuinely cared about our happiness as homebuyers. Thank you Jay, and the employees at Castlebrook Homes for building our dream home."

Another satisfied family, John, Trudy and young Joshua offer: "You possess an impressive talent for choosing outstanding employees like Charlene and quality-minded tradesman (especially Ken). You understand that the value of your reputation lies within the hands (literally) of these people and you have made some wise decisions in choosing these people. Thank you for accurately boasting the quality of your homes when we initially met to discuss the advantages of building with Castlebrook Homes. You were true to your word and we would like to express our gratitude for a wonderful new home."

Testimonials like these please Jay Rickard, the founder of Castlebrook Homes, as he encourages client involvement through all facets of the construction. Rickard is a registered Design professional and enjoys working closely with buyers to "bring their ideas to life." He has also maintained a close relationship with his tradespeople, using many of the same crews for over 20 years on the 20 or so homes he builds each year. They share his philosophy that the building process should hold no mystery; clients are encouraged to scrutinize each step of the process.

**For More Information Call:**  
**519-746-6866**  
or visit the company  
Web site at:  
**www.castlebrookhomes.com**

